

# KEEP IN TOUCH



DOOR ENTRY  
SYSTEM RANGE

 **Comelit**  
Passion. Technology. Design.

**AxPro**  
AxessProduktur

A photograph of a modern building facade featuring large glass windows and white structural frames. The building has a dark grey upper section and a white lower section. The windows are framed by white, angular structures that create a series of vertical and horizontal lines. The sky is blue with some clouds, and the foreground is a green lawn.

**COMELIT** DOOR ENTRY SYSTEM RANGE



ADVANCED  
TECHNOLOGY AND  
ITALIAN DESIGN  
IN A RANGE OF  
SPECIALISED  
SOLUTIONS  
GUARANTEED BY  
AN INTERNATIONAL  
BRAND.

Founded in 1956, Comelit Group SpA is an industrial company operating on a worldwide scale and specialising in the design and manufacture of video entry, video surveillance, anti-intrusion, home automation, access control systems and Fire Detection systems.

The company has a strong international vocation thanks to its close ties with the area in which it was created and in which its headquarters are still located today.

Comelit exports to more than 70 countries in the world and, in addition to the Italian headquarters, it consists of 15 branches located in the strategic areas in which it operates: from Europe to the Far East, from the United States to the Middle East. An articulated commercial structure, which integrates a common know-how with the knowledge of the specific needs of each market.





# FOCUSING ON MANKIND AND HIS VALUES.

Comelit has always placed mankind at the centre of its vision. This humanist approach is evident in the company's focus on its employees, in the organisation of its working environment, in the ethics governing its relationships with suppliers and distributors, and in the partnership it fosters with installers. Every Comelit product expresses this vision, constructed on the basis of enduring values.

# CONSTANT INNOVATION, FRIENDLY TECHNOLOGY.

Constantly looking at the future is Comelit's mission. Innovation through continuous investments in men and technology, is expressed in the design of new solutions, in the name of maximum simplicity and functionality, able to contribute to a better quality of everyday life.





# DESIGN: STYLE, PASSION, ART.

Besides placing technology at the service of mankind, Comelit is also a byword for design. Its unique and original style combines the most hi-tech materials with simple lines, clean shapes and cutting-edge colours. Every Comelit product therefore conveys a new concept for living in a space, in harmony with modern architectural trends.



reddot design award

DESIGN PLUS

**Merlion**  
Awards

D E S I G N  
M I L A N O





ANSWER WHEREVER  
YOU ARE.



# COMELIT APP

The Comelit App allows your video entry systems to be managed remotely by smartphones and/or tablets connected to 3G networks or above.

The Comelit APP is available free of charge for iOS and Android devices.

## ANSWER DOOR CALLS

You can answer audio or audio / video calls from a smartphone or tablet locally or remotely (with 3G or higher network).

## VIDEO MEMORY

The Video Memory function allows to record and view videos from external units and CCTV cameras (up to 10 seconds).

## VIEW AND MANAGE CAMERAS

You can view (live) CCTV cameras and images from the entrance panels.

## ACTUATOR ACTIVATION AND MANAGEMENT

This function is used to control actuators to control lights, gates, barriers, etc.



## FACE RECOGNITION

Just a call from the external unit and a few seconds. You're at the door, you ring the bell and the connected monitor sends a series of images to the Comelit cloud service, inside which a familiar face is detected: yours. The monitor sounds and warns that a known person has arrived. The phone rings, a notification arrives, it says you have arrived. But this is not enough. If you want, the monitor will also open the gate automatically, and why not? turn on the driveway light.



SCAN THE QR CODE AND WATCH THE VIDEO





# INTERNAL UNITS

10 MAXI

12 ICONA

14 MINI

16 MINI HANDSFREE

18 MINI HANDSFREE WI-FI

20 MINI AUDIO

21 MINI AUDIO HANDSFREE

22 EASYCOM

23 STYLE



# EXTERNAL UNITS

3ONE6 TOUCH	24
3ONE6 SENSE	26
SWITCH	28
ULTRA	30
QUADRA	34
VISTO	36
CIAO	38
EMERGENCY	40
EXTRA	42
VANDALCOM	43



INTERNAL UNITS



Maxi





\*Functions available only with 6813W



6812

- Full-duplex hands-free door entry monitor with 7" touch-screen (Exc 6801W and 6801W/BM) colour display
- Commands with "Sensitive touch" technology, LED backlighting and "Swipe" technology
- Semi flush-mounted, wall-mounted and desk base installation
- Version for SBTOP 2-wire and digital ViP system
- Dimensions: 223x124x12 mm
- Contrast, brightness and ringtone volume adjustment and privacy control

6801W	MAXI SERIES 7" MONITOR. SBTOP
6801W/BM	MAXI SERIES 7" MONITOR, MAG. LOOP VERSION. SBTOP
6802W	MAXI SERIES 7" MONITOR. VIP SYSTEM
6802W/BM	MAXI SERIES 7" MONITOR, MAG. LOOP VERSION. VIP SYSTEM
6802B	MAXI SERIES MONITOR, BLACK - VIP SYSTEM
6842W	MONITOR MAXI 7" WI-FI MONITOR - VIP SYSTEM
6813W	MAXI SERIES 7" MONITOR WITH ANDROID, WHITE. VIP

INTERNAL UNITS



Icona





\*\*Functions available only with 6602W /B



6612A

- Full-duplex hands-free door entry monitor with 4.3" 16/9 touch-screen (ViP) colour display
- Commands with "Sensitive touch" technology, LED backlighting and "Swipe" technology
- Semi flush-mounted, wall-mounted and desk base installation
- Version for SBTOP 2-wire and digital ViP system
- Dimensions: 142x145.5x12 mm
- Contrast, brightness and ringtone volume adjustment and privacy control

6601W	ICONA SERIES HANDS-FREE COLOUR MONITOR. SBTOP SYSTEM
6601W/BM	ICONA SERIES HANDS-FREE COLOUR MONITOR, MAG. LOOP VERS. SBTOP
6602W	ICONA SERIES HANDS-FREE COLOUR MONITOR. VIP SYSTEM. H264
6602B	ICONA VIP MONITOR, BLACK



INTERNAL UNITS



Mini



6712A SBT system  
6712V VIP system

- Full-duplex handset door entry monitor with 4.3" 16/9 colour display
- Commands with "Sensitive touch" technology and LED backlighting
- Wall-mounted and desk base installation
- Version for SBTOP 2-wire and ViP system
- Dimensions: 175x160x22 mm
- Contrast, brightness and ringtone volume adjustment and privacy control
- Available in White or Black

6701W	MINI MONITOR WITH HANDSET, WHITE. SBTOP SYSTEM
6701W/BM	MINI MONITOR WITH HANDSET AND MAG.LOOP. WHITE. SBTOP SYSTEM
6701B	MINI MONITOR WITH HANDSET. BLACK. SBTOP SYSTEM
6701B/BM	MINI MONITOR WITH HANDSET AND MAG.LOOP. BLACK. SBTOP SYSTEM
6701W/8	MINI MONITOR WITH HANDSET WITH 8 BUTTONS. SBTOP SYSTEM
6702W	MINI MONITOR WITH HANDSET AND BM. WHITE. VIP

## INTERNAL UNITS



6732A SBTOP SYSTEM  
6732V VIP SYSTEM

- Full-duplex hands-free door entry monitor with 4.3" 16/9 colour display
- Commands with "Sensitive touch" technology and LED backlighting
- Wall-mounted installation
- Version for SBTOP 2-wire and ViP system
- Dimensions: 115x160x22 mm
- Contrast, brightness and ringtone volume adjustment and privacy control

# Mini Handsfree







- |          |   |
|----------|---|
| 6721W    | MINI COLOUR HANDS-FREE MONITOR. WHITE SBTOP SYSTEM  |
| 6721W/BM | MINI HANDSFREE COLOUR MONITOR WHITE. SBTOP SYST.    |
| 6722W    | HANDSFREE MINI MONITOR. WHITE. BM. VIP SYSTEM       |
| 6742W    | COLOUR MINI HF,WI-FI AND GW WITH INDUCTION LOOP-VIP |





---

6741W COLOUR HF MINI MONITOR WITH WI-FI. SBTOP.

---

6741W/BM MINI COLOUR MONITOR, HF WI-FI AND BM. SBTOP

---



# Mini Audio



- Door-entry phone with handset
- Wall-mounted and desk base installation
- Version for SBTOP S1, SBTOP S2, 4+n
- Dimensions: 103x190x17 mm
- Ringtone volume adjustment and privacy control
- Available in White with 2 or 5 buttons

2702W	DOOR-ENTRY PHONE W/ 2 BUTTONS FOR TRAD. SYSTEM. MINI SERIES
2703U	UNIVERSAL DOOR-ENTRY PHONE WITH 2 BUTTONS. MINI SERIES
2708W/A	DOOR-ENTRY PHONE W/ 2 BTNS FOR SIMPLEBUS AUDIO. MINI SER.
2738W/A	DOOR-ENTRY PHONE W/ 2 BTNS FOR SIMPLEBUS TOP A/V. MINI SER.
2719W	DOOR-ENTRY PHONE W/ 5 BTNS FOR SIMPLEBUS TOP A/V. MINI SER.



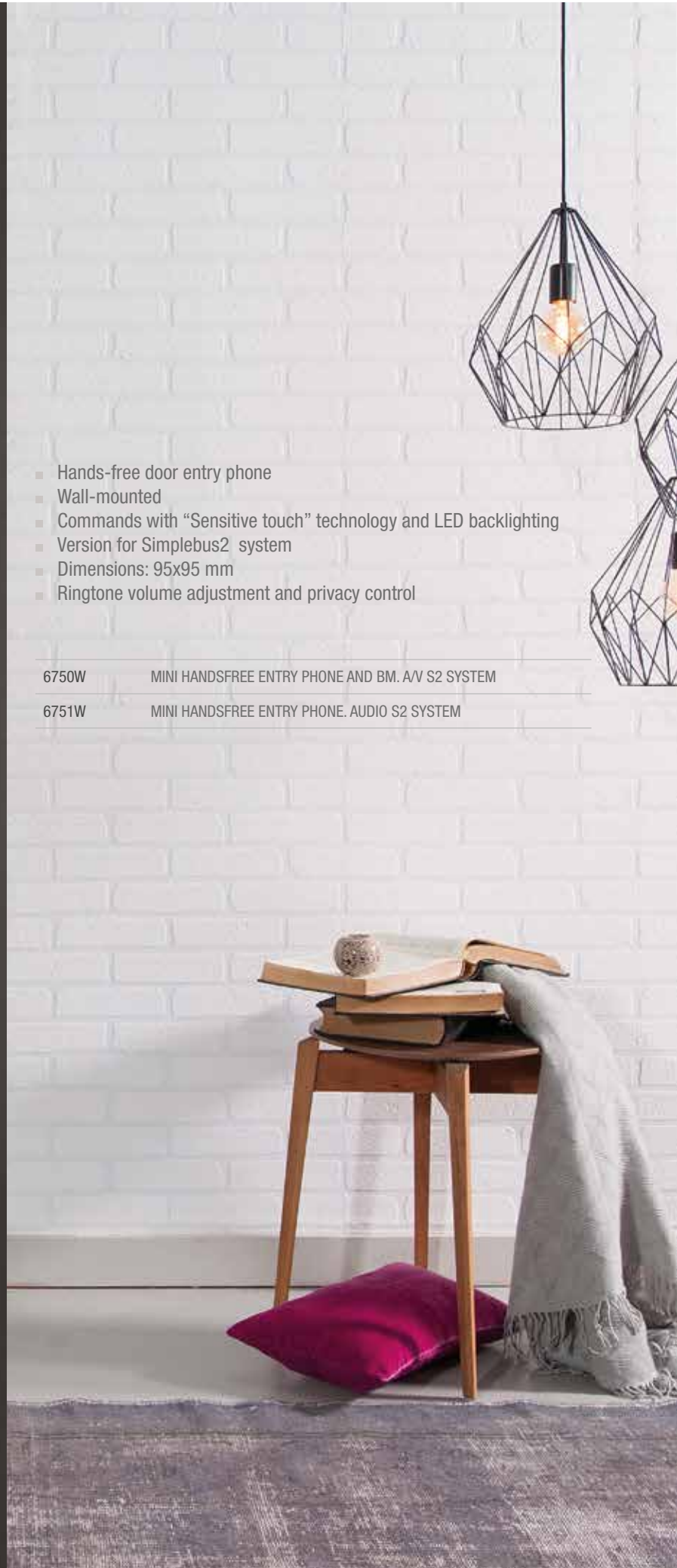


- Hands-free door entry phone
- Wall-mounted
- Commands with “Sensitive touch” technology and LED backlighting
- Version for Simplebus2 system
- Dimensions: 95x95 mm
- Ringtone volume adjustment and privacy control

6750W      MINI HANDSFREE ENTRY PHONE AND BM. AV S2 SYSTEM

6751W      MINI HANDSFREE ENTRY PHONE. AUDIO S2 SYSTEM

# Mini Audio Handsfree



## INTERNAL UNITS

# Easycom



- Hands-free door-entry phone
- Surface-mounted or desk base installation
- Version for digital ViP system
- Dimensions: 90x160x28 mm
- Call volume adjustment and privacy control
- Available in White or Black

---

6203B EASYCOM VIP UNIT - BLACK

---

6203W EASYCOM VIP UNIT - WHITE

---







# Style

- Door-entry phone with handset
- Surface-mounted or desk base installation
- Version for ViP system
- Dimensions: 95x215x58 mm
- Call volume adjustment and privacy control

2633

ELEGANCE DOOR-ENTRY PHONE, VIP SYSTEM. STYLE SERIES



EXTERNAL UNITS

**Merlion**  
Awards



reddot design award



Comelit

# 3one6 Touch





- Audio and audio/video external unit
- In AISI 316 stainless steel
- 8" backlit touch-screen colour display
- Flush- and surface-mounted installation
- Available for SBTOP 2-wire and digital ViP system
- Dimensions: 342x182x4 mm
- Attractive and intuitive fully graphic interface
- IK08 protection rating
- Voice messages and visual indications for hearing aid users via pictograms on the display
- 4 different call modes (name search, code, alphabetic entry button and button with customisable graphics)
- Integrated RFID reader

3453S STAINLESS STEEL SBC 316 TOUCH A/V ENTRANCE PANEL

3454HD 316 SERIES TOUCH HD A/V ENTRANCE PANEL, VIP.



## EXTERNAL UNITS



reddot design award



- Audio and audio/video external unit
- In AISI 316 stainless steel
- Backlit 128x64 pixel graphic display
- Alphanumeric keypad featuring exclusive “Sensitive Touch” technology
- Flush- and surface-mounted installation
- Available for SBTOP 2-wire and digital ViP system
- Dimensions: 342x182x4 mm
- Braille character keys, voice messages and visual indications for hearing aid users via pictograms on the display
- IK08 protection rating
- Integrated RFID reader
- Night-time lighting with accessory (rain shield)



3451AS	STAINLESS STEEL SBC DIG. 316 SENSE AUDIO ENT.PAN.
3451S	STAINLESS STEEL SBC DIGITAL 316 SENSE A/V ENT.PAN.
3452HD	316 SERIES SENSE HD A/V ENTRANCE PANEL, VIP.

# 3one6 Sense







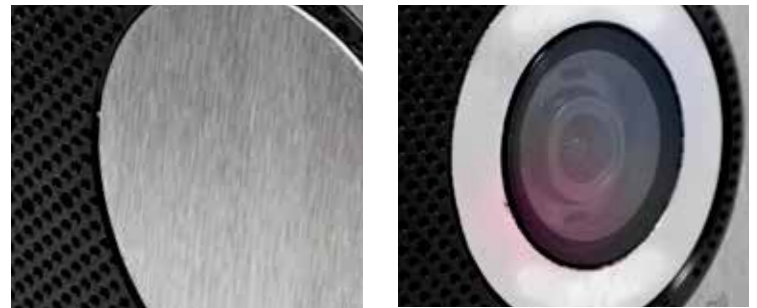
EXTERNAL UNITS







# Switch



- Audio and audio/video entrance panel in AISI 316 steel.
- Brushed finish.
- Available in versions with 1 to 33 buttons.
- Smart call buttons (3061M - 3061S).
- Protection rating IK08
- Voice messages and red LED light indications.
- Entrance panel to be finished with audio or audio/video module depending on wiring.
- Pre-connected Smart buttons with nameplates that can be replaced even after the entrance panel has been installed.
- Nameplates with white LED backlighting.
- Sturdy and extremely durable.
- Flush- or surface-mounted external unit.
- 2.5 mm thick plate.

FOR FURTHER INFORMATION PLEASE CONTACT COMELIT SALES

# Ultra



- Modular external panel Audio and Audio/Video
- Die-cast aluminium frames coated using cataphoresis
- Available in surface-mounted (35mm) and in flush-mounted (10mm) version
- 2-wire and ViP systems
- Protection rating IP65 and IK08
- Call module with facility for single (4 calls) and double (8 calls) buttons
- Buttons are available in 3 versions: Plastic, Metal and Full Metal.
- Button backlighting with independent white LED regulation
- Camera LED and backlighting controlled by the twilight sensor
- Wide-angle camera (2 Wire: H120° x V90°, ViP: H160° x V100°)
- 3 indicator LEDs for: call sent (green) / system busy (red), lock-release activated, audio enabled
- Button address programming with Smart mode.
- Available in button, digital and touch module versions.
- Touch modules and digital directory equipped with Bluetooth connection

FOR FURTHER INFORMATION PLEASE CONTACT COMELIT SALES









EXTERNAL UNITS



Comelit



Ultra





- Ultra Touch has a 5-inch color touchscreen with easy-to-use graphics. It allows almost unlimited customizations, such as inserting the company logo and setting a welcome screen. It is equipped with an RFID proximity reader to open doors without any key
- Ultra in the Digital Directory version is equipped with a 3.5-inch color display and backlit mechanical buttons. You can customize the buttons to make your search faster or to categorize terms
- The Digital Directory module works both stand-alone and in conjunction with the code keypad, with which the desired destination address can be called and the door can be opened with a numeric code

FOR FURTHER INFORMATION PLEASE CONTACT COMELIT SALES



# EXTERNAL UNITS



DESIGN PLUS



# Quadra





- Audio/video external unit
- Die-cast aluminium cover
- Mechanical call buttons
- Surface-mounted installation
- Dimensions 95x195x23 mm.
- Colour video camera with wide viewing angle
- IK08 protection rating
- 4 indicator LEDs for call sent, door open, audio active, system busy
- White LED for illumination
- Nameplate holder in versions with 1/2/4 buttons
- High performance loudspeaker

4893M	QUADRA ENTRANCE PANEL W/ BUTTONS. 2-WIRE
4793MA	ALUMINIUM FACEPLATE FOR QUADRA ENTRANCE PANEL
4793MB	BLACK FACEPLATE FOR QUADRA ENTRANCE PANEL
4793MC	CORTEN FACEPLATE FOR QUADRA ENTRANCE PANEL
4899M	QUADRA ENTRANCE PANEL BUTTONS, FOR VIP SYSTEM

## EXTERNAL UNITS



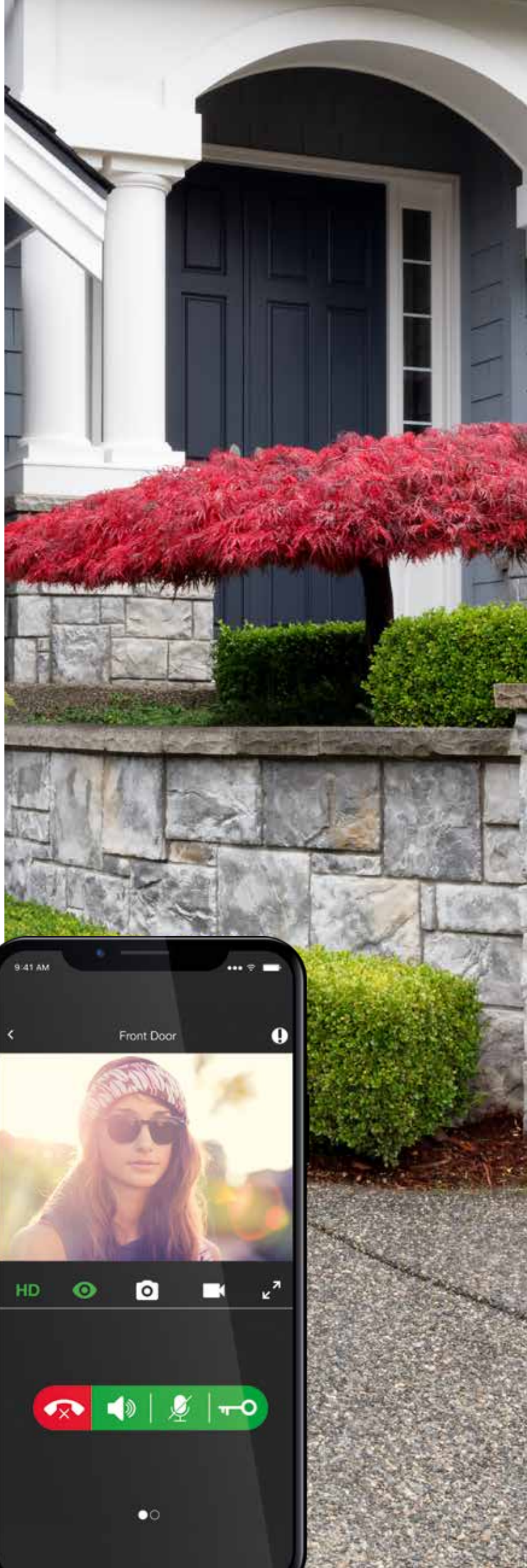
- HD live Streaming
- Answer with your smartphone
- Motion Detection
- Surface mounted
- Dimensions 135x 46x32 mm
- RGB LEDs
- High quality audio
- Interchangeable coloured covers



KITVISTO	WI-FI VISTO KIT
KITVISTO/C	WI-FI VISTO KIT WITH POWER SUPPLY AND WIRELESS CHIME
VS8111	VISTO WI-FI EXTERNAL UNIT. VIP SYSTEM*
VS8101	VISTO ETHERNET EXTERNAL UNIT. VIP SYSTEM*

# Visto

\*for integration in a VIP intercom system









EXTERNAL UNITS



Ciao





- Audio entrance panel in die-cast aluminium.
- Wall-mounted entrance panel.
- Protection rating IK08.
- Entrance panel certified as IP54.
- Dimensions 9.85x17.1 cm with a thickness of just 2.85 cm.
- Long-lasting sturdiness and durability.
- Available in a 2-wire version with 1 to 72 buttons (1 audio module + 4 button modules).
- Available in a 5-wire version with 1 to 4 buttons (1 audio module).
- Call buttons with simplified programming.
- Nameplates with white LED backlighting (2-wire digital version).
- Nameplates with blue LED backlighting (5-wire version).
- Buttons with nameplates that can be replaced from the front.

---

CA2100P WALL-MOUNTED CIAO ENTRANCE PANEL FOR 1/2/4/8 BUTT. S2

---

CA2200P WALL-MOUNTED CIAO MODULE FOR 2/4/8/16 BUTT. S2

---

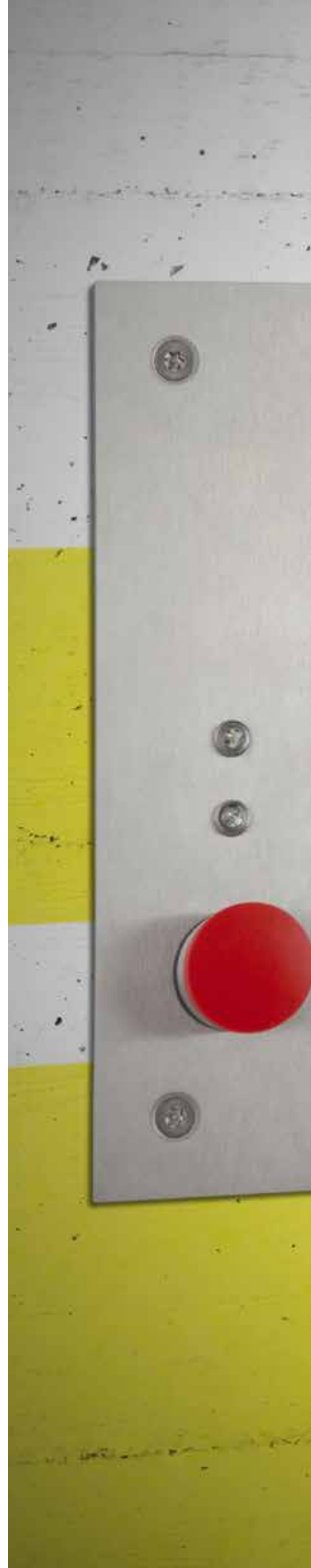
CA5100P WALL-MOUNTED CIAO ENTRANCE PANEL FOR 1/2/4 BUTT. 4+N

---

# Emergency



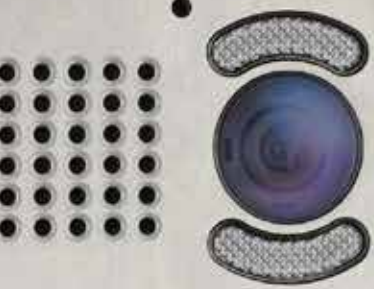
- Audio and audio/video external unit
- Anti-vandal screws
- AISI 316 stainless steel 2.5 mm thick
- Indication and information written in standard text & braille
- The button can be used to call a switchboard, a mobile device or a direct number
- Call Status Indicator Light
- Flush- and surface-mounted installation







Comelit



CALL PLACED

CALL ANSWERED

**EMERGENCY**  
112





# Extra



- Audio external unit
- Stainless steel cover
- Available with 1, 2, 3 or 4 buttons
- Surface or wall-mounted installation
- Dimensions 95x135x25 mm.
- Easy to change/remove nameplates
- High performance loudspeaker
- White LED illumination

ET5001	EXTRA 4+N. SERIES ENTRANCE PANEL KIT. 1 BUTTON
ET5002	EXTRA 4+N. SERIES ENTRANCE PANEL KIT. 2 BUTTONS
ET5100	EXTRA 4+N BUTTON MODULE; BUTTONS NOT INCLUDED
ET5200	EXTRA 4+N MODULE; BUTTONS NOT INCLUDED
ET9210	2 DOUBLE HEIGHT BUTTONS FOR EXTRA ENTRANCE PANEL
ET9211	4 SINGLE BUTTONS FOR EXTRA ENTRANCE PANEL





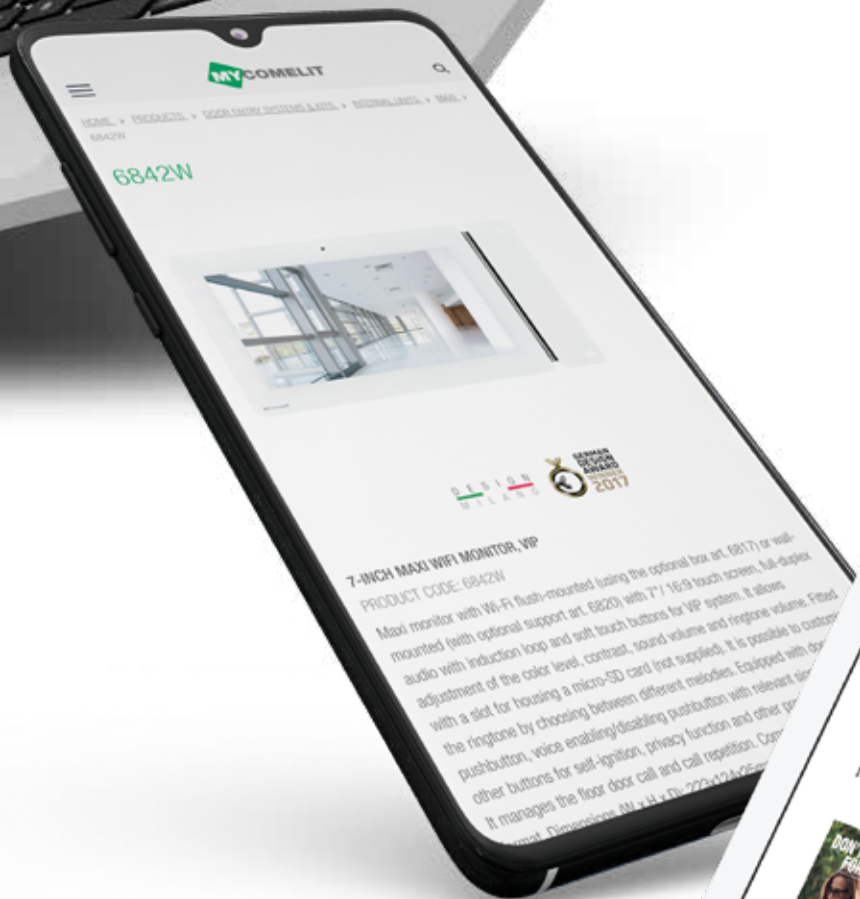
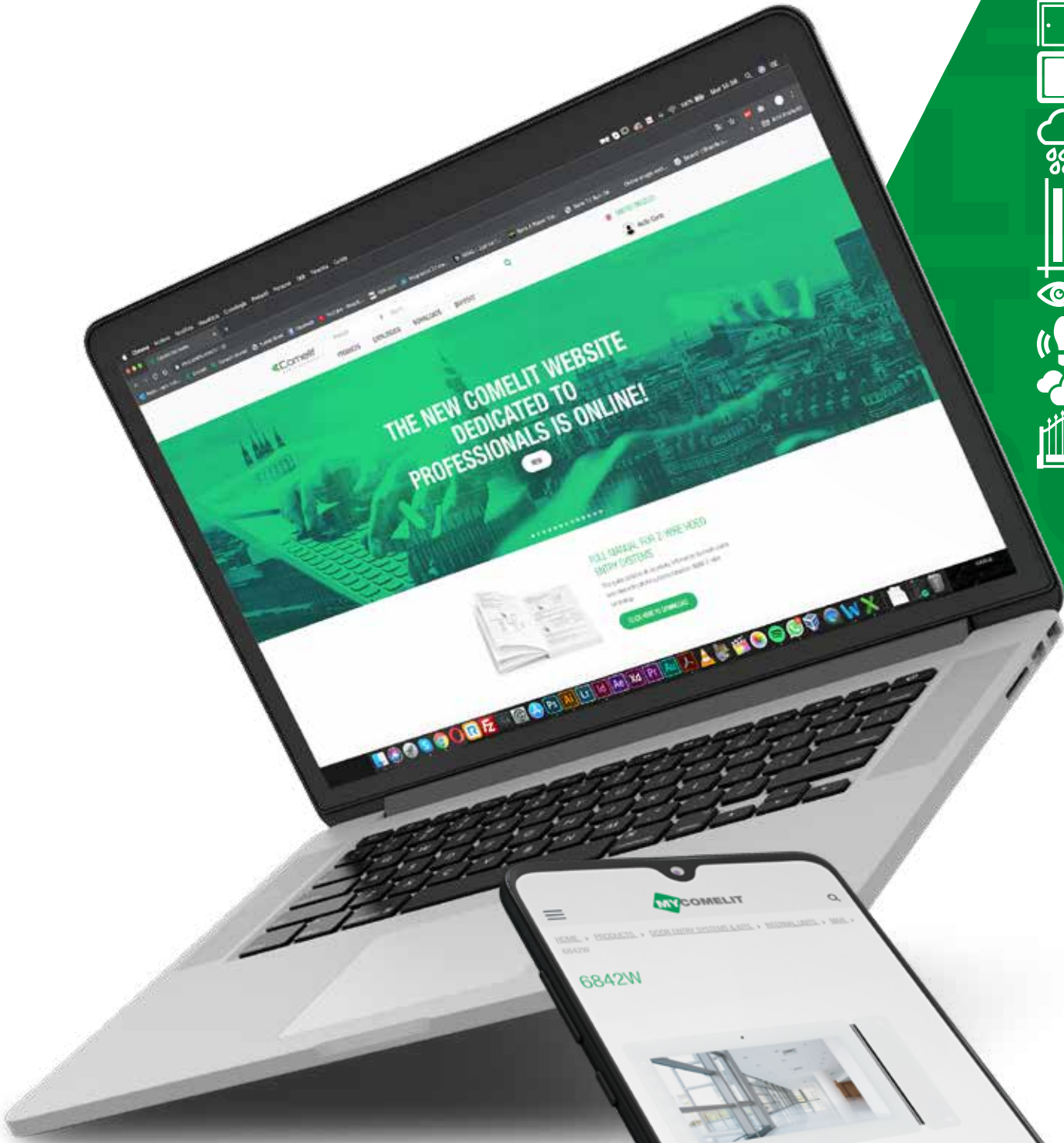
# Vandalcom



- Audio and audio/video external unit
- Modules made using double 2.5 mm stainless steel plate
- Flush- and surface-mounted installation
- Available for SBTOP 2-wire and digital ViP system
- Stainless steel micro stroke buttons
- Analogue or digital version
- IK10 protection rating

FOR FURTHER INFORMATION PLEASE CONTACT COMELIT SALES









# DEEP ROOTS, INTERNATIONAL VOCATION

Comelit's strong international vocation originates from its close ties with the area in which it was created and in which its headquarters are still located today (Val Seriana, to be precise). Comelit exports to over 70 countries worldwide: this articulated sales structure integrates shared know-how with the awareness of specific requirements in each market.



## GLOBAL OFFICES AND BRANCHES

Italy (headquarters)  
France  
Germany  
Spain  
Ireland  
Belgium  
Netherlands  
Great Britain  
Ireland  
Greece  
United Arab Emirates  
Russia  
Hong Kong  
Republic of Singapore  
Australia  
Colombia  
United States of America

## COMELIT IN NUMBERS

**97**  
countries in which we have performed  
installations

**20,000,000**  
door entry monitors installed

**320,000 m<sup>2</sup>**  
the largest single door entry monitor system  
created (110 buildings, 11,250 apartments)





1



2



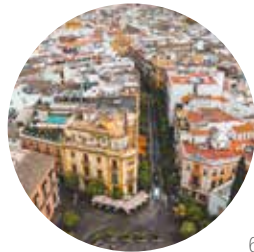
3



4



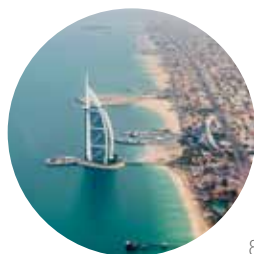
5



6



7



8



9



10



11



12

1. Glasgow, Scotland, Southern General Hospital
2. UK, Poole, Moriconium Quay
3. USA, NY, Manhattan, Sty town
4. Monaco, Tour Odeon
5. UK, London, Riverlight residences
6. Spain, La Coruna, Trebol Tower
7. Holland, Rotterdam, New Orleans Tower
8. UAE, Dubai, Palm Jumeirah
9. Qatar, Doha, Sidra Hospital
10. UAE, Abu Dhabi, Sun and Sky Towers Al Reem Island
11. Singapore, Costa Rhu
12. Malaysia, Kuala Lumpur, Kiaromas Danai



cod. 2631000690  
8 023903 411898

[www.comelitgroup.com](http://www.comelitgroup.com) [www.axpro.se](http://www.axpro.se)

 **Comelit**<sup>®</sup>  
Passion. Technology. Design.

**AxPro**  
AxessProduktor

No part of this document may be reproduced without prior written authorisation from Comelit Group spa.  
The brands and trade names cited in this publication are the property of their respective owners.